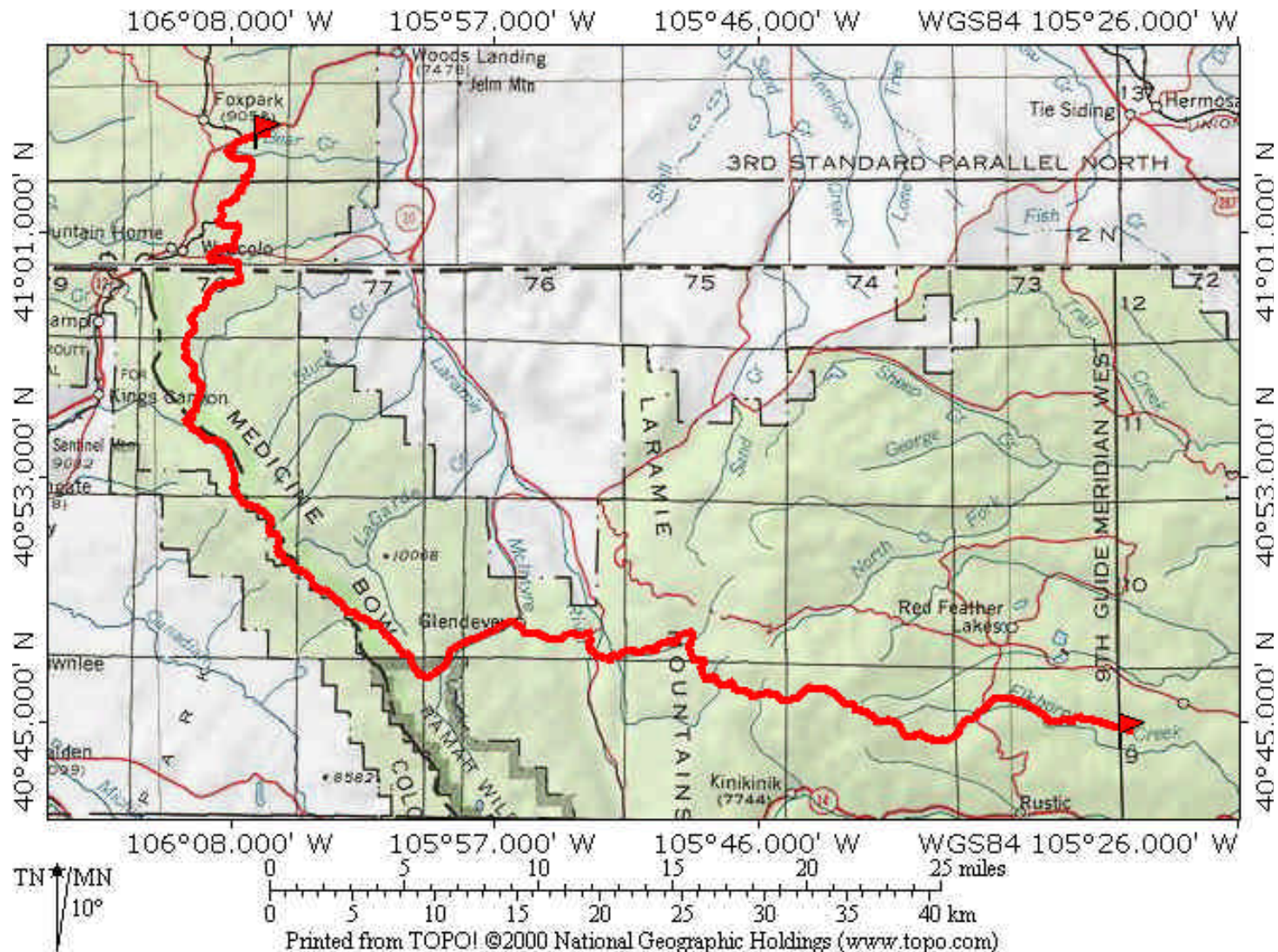


Troop 188 High Adventure Trips

- **Backpacking – 1 week trip**
- **Backpacking – 50/50**
- **Backpacking - Yellowstone**
- **BDSR/Supertrek**
- **Seabase – Florida**
- **Northern Tier**
- **Philmont 2011**
- **River Based (raft)**



The Route 50-50 Backpack

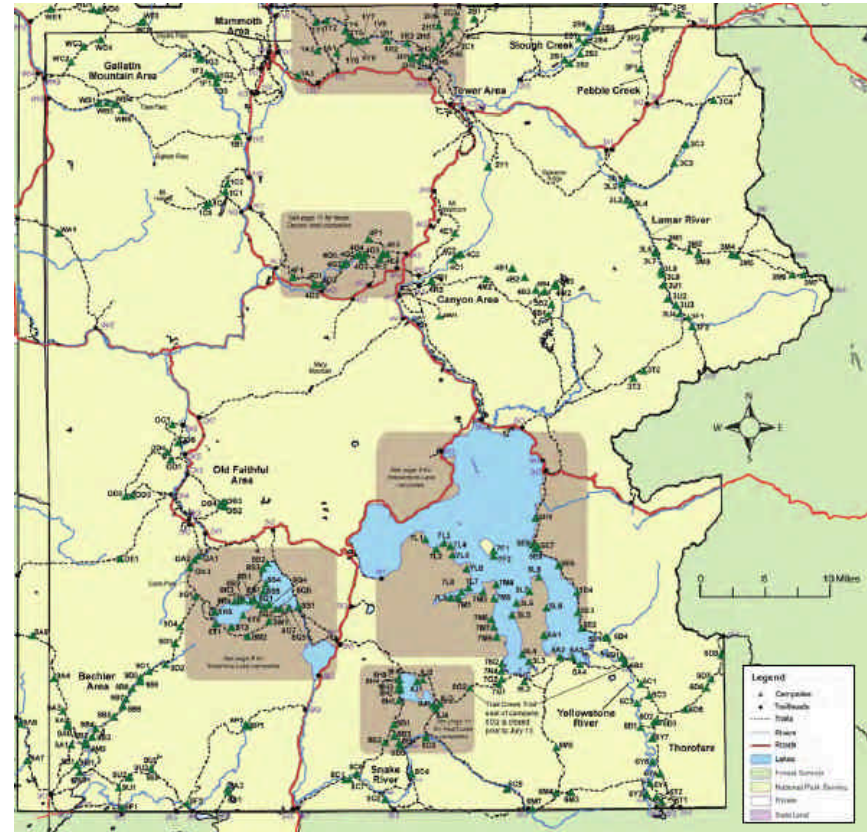


50-50 Trip Facts

- 68 miles from Chimney Park to BDSR
- Offered during Summer Camp.
 - Starts Sunday afternoon morning from Chimney Park
 - Ends Friday afternoon at BDSR in time for campfire.
- All equipment and gear is provided except sleeping bag
- Cost \$300
- Beautiful views in the Rawah's.

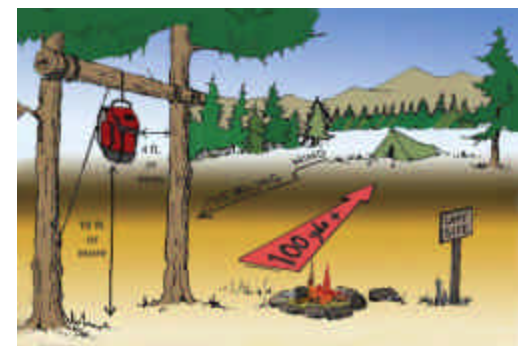
Backpacking in Yellowstone

- Lots of options of different lengths
- Could combine with shorter river trips
- Camping only in designated campsites
 - Size of the group may limit us
- Could canoe to trailhead, then pack
- Likely not as much elevation gain as some other backpacking options
- Lots of wildlife
 - Need to be very diligent
- Inexpensive
- Need to reserve sites ahead of time
- Need to get permit in person when we arrive
- Cost mainly transportation and food.



Yellowstone Backpacking Trip planner:

http://visit/upload/bc_tripplanner9-08.pdf



Seabase High Adventure

Program Options

- Bahamas Tall Ship Adventure
- Bahamas Adventure
- Out Island Adventure
- Sea Exploring (Key's tall ship)
- Coral Reef Sailing





2010 SEA BASE ARRIVAL DATES Not Including Airfare				
ADVENTURE	FEE	CREW SIZE *	SEASONS	SUMMER ARRIVAL DAYS
Coral Reef Sailing 14 by September 1, 2010	\$5,650.00 per crew	6 Minimum 8 Maximum	Spring/Summer/Fall/Winter	Daily beginning Saturday, May 29 last arrival date August 16
Sea Exploring Adventure 14 by September 1, 2010	\$14,000.00 per crew ~ \$780 per person	18 Minimum 20 Maximum	Spring/Summer/Fall/Winter	Fridays, Saturdays, Sundays, Tuesdays, Wednesdays, beginning May 28 last arrival date August 15
Keys Adventure 14 by September 1, 2010	\$700.00 per person	6 Minimum 8 Maximum	Spring/Summer/Fall/Winter	Beginning on May 31 and continuing every other day with the last arrival date August 15
Out Island Adventure 14 by September 1, 2010	\$700.00 per person	6 Minimum 8 Maximum	Spring/Summer/Fall/Winter	Beginning on May 30 and continuing every other day with the last arrival date August 14
Bahamas Adventure 14 by September 1, 2010	\$5,650.00 Per crew	6 Minimum 8 Maximum	Spring/Summer	Mondays/Wednesdays beginning May 17 last arrival date August 4
Bahamas Adventure 14 by September 1, 2010	\$8,450.00 per crew	10 Minimum 12 Maximum	Spring/Summer	Fridays/Saturdays beginning May 21 last arrival date July 31
Bahamas Tall Ship Adventure 14 by September 1, 2010	\$695.00 per person	18 Minimum 20 Maximum	Spring/Summer	Saturdays beginning May 22 last arrival date July 31

Rafting Trip



- North Idaho High Adventure Base
 - Rafting and Jet boat on Lower Salmon
 - \$550 base cost 5 days – 53 miles



Salmon River High BSA High Adventure

\$225 2 1/2 days + Yellowstone Backpacking
~\$400 total



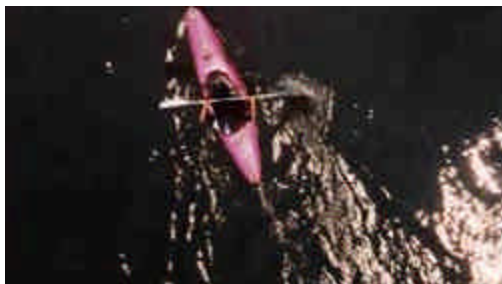
Rafting



Yellowstone



C.O.P.E.S



Self Outfitted

(\$2-\$400 depending on equipment rental costs)

- Canoeing – North Platte, White River, Lower Dolores, Labyrinth



- Rafting
– Desolation/Grey

